



Innovation  
that excites

# NISSAN NAVARA



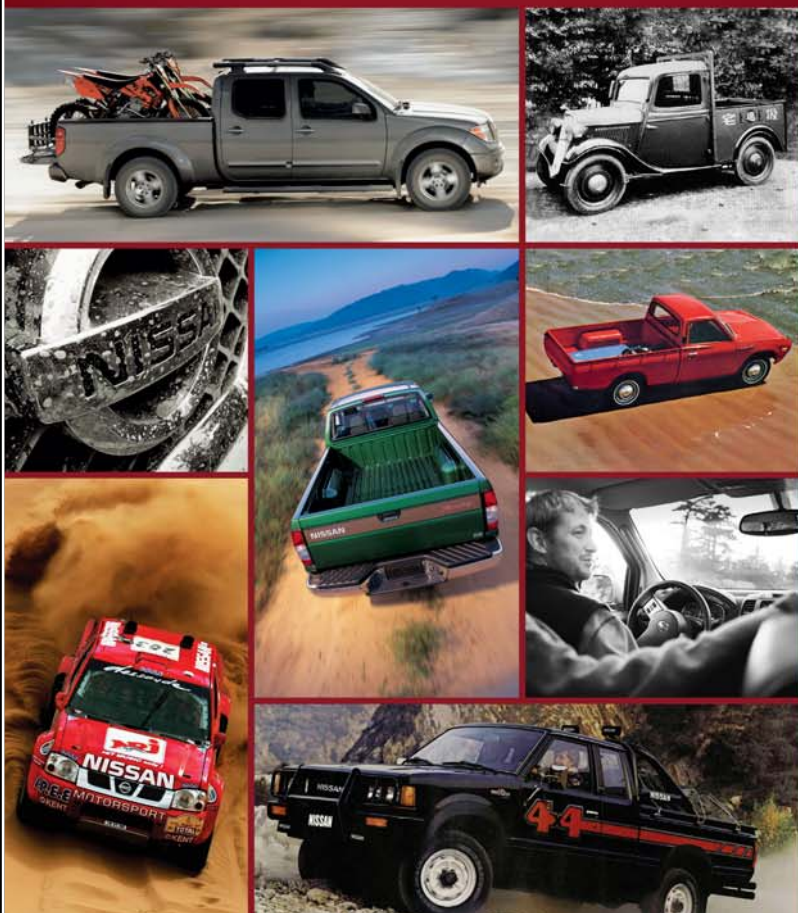
[Introduction](#) | [Exterior design](#) | [Versatility](#) | [Interior design](#) | [Technology and Performance](#) | [Accessories](#) | [Technical Specifications](#) | [CO2 emissions](#) | [Further Information](#)

[Print](#) | [Close](#)

[REQUEST A TEST DRIVE](#)



Tough, agile and stylish, the new Nissan NAVARA 4x4 is the latest in a long line of Nissan pick-ups – we produced our first in 1935. Along the way we've pioneered the King Cab in 1977, the innovative C-channel lashing system in 2005, and now the first use on a one-ton pick-up of 5 link rear suspension. Our proud legacy, shared among **14 MILLION PICK-UP OWNERS** blazing trails in **180 COUNTRIES** continues today. As long as there's adventure on the horizon, Nissan will lead the way.



# 80 YEARS OF TOUGH



[Introduction](#) | [Exterior design](#) | [Versatility](#) | [Interior design](#) | [Technology and Performance](#) | [Accessories](#) | [Technical Specifications](#) | [CO2 emissions](#) | [Further Information](#)

[Print](#) | [Close](#)

[Page 1](#) | [Page 2](#)

[REQUEST A TEST DRIVE](#)





## TOUGH AND SMART

We've always built strong, dependable pick-ups and we've consistently innovated to deliver what you want. The 2.3L dCi engine, in 190PS twin turbo or 160PS single turbo forms and linked to a 2WD or 4WD transmission, delivers the rugged performance and best-in-class fuel economy you demand from a Nissan pick-up. With fuel economy of up to 46.3mpg, it takes you off and on road without missing a beat - and with a standard 5 Year / 100,000 mile warranty, that's a promise you can trust. Experience the versatility and efficiency of the next generation Nissan pick-up - tough as always, smarter than ever.

\*Image for illustration purposes only. Please consult the technical specification for full line-up details.





## THE PICK-UP YOU CAN TRUST, RIGHT DOWN TO ITS CORE.

The new Nissan NAVARA 4x4 pick-up has a fully boxed ladder chassis rather than the three-sided channel-section frame found on some other pick-ups. There's also a new 5 link coil spring rear suspension, unique in the one-tonne pick-up segment. This gives a better ride and more agile handling, without compromising load-carrying ability.



**ANGLE OF  
APPROACH**  
30.4°  
**WADING  
DEPTH**  
600 mm

Figures are for a NAVARA Double Cab. Figures may vary according to grade and cab type. Please consult the technical specification for full line-up details.

**ANGLE OF  
DEPARTURE**  
25.6°

**223mm  
MIN GROUND  
CLEARANCE**



## FULLY BOXED. FULLY CAPABLE.

Pull up to 3,500kgs, carry over 1-tonne payload and experience enhanced performance on all terrains. The new Nissan NAVARA's fully boxed ladder frame is made with rugged high-tensile strength steel for improved structural rigidity and more torsional stiffness.

[Introduction](#) | [Exterior design](#) | [Versatility](#) | [Interior design](#) | [Technology and Performance](#) | [Accessories](#) | [Technical Specifications](#) | [CO2 emissions](#) | [Further Information](#)

[Print](#) | [Close](#)

[Page 1](#) | [Page 2](#) | [Page 3](#) | [Page 4](#)

[REQUEST A TEST DRIVE](#)







Hill Start Assist



Part-time four wheel drive\*



Electronic Limited Slip Differential (eLSD)



Rear Differential Lock\*



Hill Descent Control\*

## CLIMB, CRAWL AND POWER YOUR WAY THROUGH.

Whether it's the depths of the country or the concrete jungle, the new Nissan NAVARA is always in its element. There are three driving modes - 4WD High for light off-roading, 4WD Low for serious off-road driving in sand, snow or deep mud, or 2WD for when you're on tarmac. With features such as Hill Start Assist and Hill Descent Control, it's the pick-up that's ready for anything, giving great traction even in 2WD mode with thanks to its electronic Limited Slip Differential (eLSD).

\*Not available on all grades. Please consult the technical specification for full line-up details. Image for illustration purposes only. Please consult the technical specification for full line-up details.

**Hill Start Assist and Hill Descent Control\*** Tackling hilly terrain? Now you can do it with more confidence and control. On an incline, Hill Start Assist can help keep you from rolling backwards when you're accelerating from a stop. Hill Descent Control helps you maintain a steady and constant speed, so that you descend a steep gradient safely.







## DEVOURS ROADS.

Outside, it's a 4x4 pick-up. Inside, the new Nissan NAVARA is more like a premium Crossover. Check out the ergonomic design of the dashboard and the high quality trim materials used. Relax in the NASA designed spinal-support seats, set the dual-zone Automatic climate Control and revel in the comfort of multi-link coil spring rear suspension. More than a workhorse, this pick-up's a pleasurable daily ride.

### 2.3-LITRE DCI ENGINE

Generating more horsepower and torque and with fuel efficiency improvements over the outgoing model of 24%, the new 2.3-litre 190PS twin-turbo diesel engine with either a 6-speed manual or 7-speed automatic transmission delivers fantastic acceleration and performance. The 160PS single-turbo version offers leading fuel economy of up to 46.3mpg.

|                              |  |
|------------------------------|--|
| ENGINE DISPLACEMENT          | 2298 CC                                |
| FUEL TYPE                    | DIESEL                                 |
| FUEL CONSUMPTION             | UP TO 46.3mpg                          |
| EMISSIONS (CO <sub>2</sub> ) | FROM 159 G/KM                          |
| POWER                        | 160 PS (120 kW)<br>190 PS (140 kW)     |
| TORQUE                       | 403 NM @ 1500 RPM<br>450 NM @ 1500 RPM |
| MAXIMUM TOWING               | 3,500 KG                               |
| MAXIMUM PAYLOAD              | 1,156 KG                               |

FUEL ECONOMY  
UP TO

**46.3** MPG





## PULLING POWER

Of course the boat can come along, because heavy duty towing is engineered right into the NAVARA, with a towing capacity of 3,500kg on all 4WD models. Heavy duty components such as the brakes, transmission and cooling system, plus plenty of power and low end torque mean you're ready to pull some serious weight.



**3,500KG**  
TOWING CAPACITY\*

\*2WD Towing capacity 3035kg.

[Introduction](#) | [Exterior design](#) | [Versatility](#) | [Interior design](#) | [Technology and Performance](#) | [Accessories](#) | [Technical Specifications](#) | [CO2 emissions](#) | [Further Information](#)

[Print](#) | [Close](#)

[Page 1](#) | [Page 2](#) | [Page 3](#) | [Page 4](#)

[REQUEST A TEST DRIVE](#)





## LOAD UP OUR MOST VERSATILE PICK-UP BED EVER.

The new Nissan NAVARA is engineered to handle tough jobs and heavy payloads of over 1 tonne. A lighter tailgate makes loading and unloading simple. Ensuring your cargo is secure is easy, too, thanks to Nissan's revolutionary C-channel tie-down system\*. Moveable cleats can be locked anywhere in special tracks and on the three sides of the pick-up bed, so you can secure your load.

**1T**  
OVER 1 TONNE  
PAYLOAD

\*Optional on VISIA, standard from ACENTA.  
Please consult the technical specification for full line-up details.

[Introduction](#) | [Exterior design](#) | [Versatility](#) | [Interior design](#) | [Technology and Performance](#) | [Accessories](#) | [Technical Specifications](#) | [CO2 emissions](#) | [Further Information](#)

[Print](#) | [Close](#)

[REQUEST A TEST DRIVE](#)





The King Cab has rear doors that are hinged from the rear and have no B pillar, giving passengers easy access to the two rear seats. These seats can also flip up out of the way to reveal a large open space. This, combined with the larger door opening, means that bulkier items can be transported inside the cabin.



Large pockets located in the driver and passenger doors offer ample, easy-to-access storage.



The high-capacity glove compartment is ideal for your documents and files, even the bulkier ones.

## STORE IT. HIDE IT. LOCK IT. LOVE IT.

A thoughtfully designed, flexible interior featuring lots of clever storage space is handy for work and play. There's a spot for your stuff underneath the rear passenger seats, in the side door pockets, in the generous glove compartment and in the large centre console too. Thirsty? You'll find cup-holders almost everywhere you look: next to the front seats and even designed into the front and rear door pockets.

The centre console includes large cupholders and a deep covered storage bin for items you want close at hand but out of sight.

Storage bins conveniently located under the rear seats are perfect for items you want to keep concealed.







## RIDE FIRST CLASS EVERY DAY.

In the new Nissan NAVARA, you'll find fantastic levels of comfort and space from every seat. Up front, NASA designed zero-gravity seats create neutral posture and improved blood flow to help make those long rides a lot more comfortable. Plus, automatic air conditioning with dual-zone climate control\* means you and your passengers can tailor the temperature individually, while circular air vents pinpoint exactly where you want the air to go.

\*Available from ACENTA+. Please consult the technical specification for full line-up details.

[REQUEST A TEST DRIVE](#)







## INNOVATION AT YOUR FINGERTIPS.

The new NAVARA cabin is packed full of the innovative technology seen on Nissan's market-leading Crossover range\*. Nissan Intelligent Key with start push button ignition allows you to lock and unlock the doors\*\* and start the engine without taking the key out of your pocket. The cruise control, speed limiter and AM/FM/CD audio system can all be operated through steering wheel mounted controls. The Bluetooth hands-free phone system lets you make and take calls with ease, while the USB port and the AUX socket allow you to play your favorite music from your phone or MP3 player.

\*Specification varies by grade. Please consult the technical specification for full line-up details.  
\*\*Excludes load-bed. Please consult the technical specification for full line-up details.

[REQUEST A TEST DRIVE](#)





**NISSAN ADVANCED DRIVE-ASSIST DISPLAY**

# INNOVATION THAT'S RIGHT IN FRONT OF YOU.

With so much going on around you, it's easy to lose sight of what's most important: driving. From fuel economy to song tracks to navigation instructions, the 5" HD full colour TFT screen combimeter\* displays information right in front of you - so you can keep your eyes on the road.



[REQUEST A TEST DRIVE](#)





NissanConnect

## YOUR WORLD, SERVED UP.

With NissanConnect 2.0\*, the new Nissan NAVARA can sync perfectly with your smartphone. Your own hand-picked music, Facebook news feed, latest tweets, TripAdvisor tips, and more can all come along for the ride, working seamlessly together through your smartphone and the 7" colour touch-screen. It keeps on getting better: the basic app package is complimentary for the first three years.

The NissanConnect 2.0\* satellite navigation and entertainment system also comes with digital radio (DAB), Bluetooth telephone integration and audio streaming, traffic updates and eco driving tracking.



\*Available from N-CONNECTA. Please consult the technical specification for full line-up details



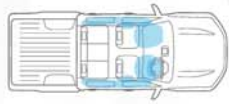
## NISSAN SAFETY SHIELD

# SURROUND YOURSELF WITH CONFIDENCE.

The Nissan Safety Shield is a comprehensive approach to safety that guides the engineering and development of every vehicle we make. The features described here are just some of many on the new Nissan NAVARA, helping to protect you by focusing on three key areas: keeping an eye on your vehicle's systems and the surroundings, assisting in handling unexpected situations, and helping to keep you safe.

**Traction Control System (TCS).** TCS senses when a drive wheel starts to slip and reduces engine power or applies brake pressure to help restore traction.

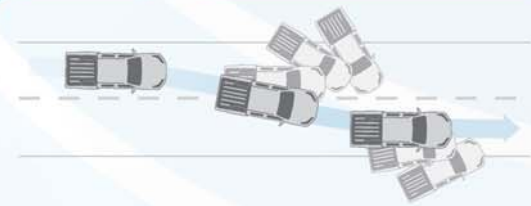
**Zone Body Concept.** Nissan's Zone Body Concept helps absorb the impact and protect the passenger compartment in the event of a collision. It features a high-intensity cabin structure with crossmembers and reinforcements, front and rear crumple zones, and an energy-absorbing steering column.



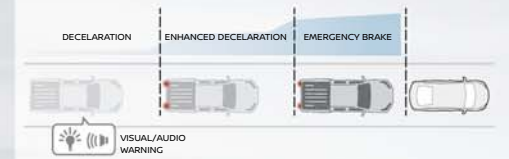
**7 Standard Air Bags.** Driver and passenger airbags in the front, two side-impact air bags mounted in the front seats, two side-impact curtain air bags mounted in the roof and an air bag for the driver's knee.



**Around View Monitor\*.** Four cameras give you a virtual 360° bird's-eye view of your vehicle, with selectable splitscreen close-ups of the front, rear, and curbside views. You can check slow-speed manoeuvring on-road or off-road to avoid obstacles.



**Vehicle Dynamic Control (VDC).** VDC monitors your steering, braking and the vehicle's stability and, if needed, will reduce engine power and apply brake pressure to specific wheels in order to keep you on your intended path.



**Forward Emergency Braking (FEB)\*.** Radar mounted in the front bumper measures the gap to the car in front. If it recognises there is a risk of collision, it will give an audible and visual warning. If the driver doesn't brake enough, the vehicle will automatically brake to help to avoid an accident.

**Anti-lock Braking System (ABS).** ABS prevents the wheels from locking under hard braking, allowing you to stop quicker and at the same time steer around obstacles.

**Electronic Brake force Distribution (EBD).** EBD automatically sends extra force to the rear brakes when it detects there's additional weight in the back.

**Electronic Limited Slip Differential (eLSD)\*.** In low-traction conditions (snow, mud, dirt, bumps, slopes, etc.) the vehicle senses if one wheel is slipping and automatically slows that wheel using the brakes to regain traction and keep you moving. Works on all 4 wheels.

\*Items not available on all grades. Please consult the technical specification for full line-up details.





## WORK HARDER FOR LONGER

Engineered to give years of tough, reliable service, the new NAVARA is the pick-up of the pros. Heavy duty to the core and built to last, it's a highly dependable partner which will help your business thrive. Fully equipped with Nissan's latest technology suite, this workhorse has true pedigree.







## WEIGH YOUR OPTIONS.

The new Nissan NAVARA meets the needs of businesses with a diverse range of vehicles. Choose from the increased load bed capacity of the King Cab or the crew-friendly seating of the Double Cab. Chassis versions without the rear load bed are also available for conversion purposes.

[REQUEST A TEST DRIVE](#)





**STAY IN SHAPE WITH  
NISSAN GENUINE ACCESSORIES**

Style and protect your pick-up with Nissan Genuine Accessories, tailor-made for NAVARA to keep it tougher and smarter for longer.



1



2



3



4

5

6

- 1- Tonneau cover, soft
- 2- Roll cover
- 3- Tonneau cover, aluminium
- 4- Hard top
- 5- Chrome side styling bar stainless steel
- 6- Chrome front styling bar stainless steel
- 7- Plastic bedliner
- 8- Tailgate protection in plastic
- 9- Aluminium bedliner



HARD TOP



Stop lamp



Interior lighting\*



Interior trims\*



Opening windows\*

\* Not available on standard version



7

8



9





**COLOURS**

M: Metallic - S: Solid



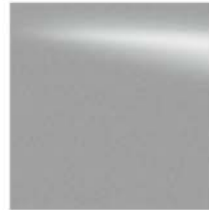
ALABASTER WHITE (S)



EARTH BRONZE (M)



SAVANNAH YELLOW (M)



STARBURST SILVER (M)



FLAME RED (S)



BLACK (M)



TWILIGHT GREY (M)

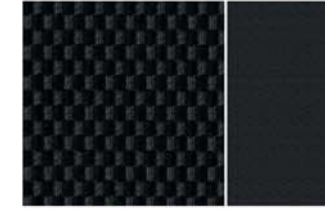


CAYMAN BLUE (M)

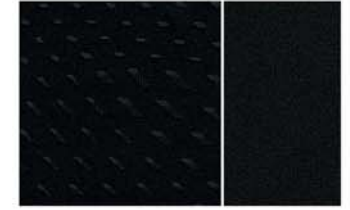
**TRIMS**



VISIA - GRAPHITE CLOTH



ACENTA - GRAPHITE CLOTH



TEKNA - GRAPHITE CLOTH



N-CONNECTA - GRAPHITE CLOTH



TEKNA - GRAPHITE LEATHER

**WHEELS**



16" STEEL WHEELS  
VISIA



16" ALLOY WHEELS  
ACENTA



18" ALLOY WHEELS  
ACENTA+, N-CONNECTA, TEKNA

**DIMENSIONS**



**DOUBLE CAB**

A: Overall height: 1,840 MM (with roof bars)  
B: Overall length: 5,330 MM  
C: Overall width: 2,085 MM (with opened mirrors)

**BED**

Height: 474 MM (tailgate lift height)  
Length: 1,578 MM (at floor)  
Width: 1,560 MM (max)



**KING CAB**

A: Overall height: 1,790 MM  
B: Overall length: 5,225 MM  
C: Overall width: 2,085 MM (with opened mirrors)

**BED**

Height: 474 MM (tailgate lift height)  
Length: 1,788 MM (at floor)  
Width: 1,560 MM (max)



Dimensions vary by grade. Please consult the technical specification for full line-up details.



## NISSAN LCV 5 YEAR / 100,000 MILE MANUFACTURER WARRANTY

Nissan now offers a standard 5 Year Pan-European Manufacturer Warranty on its whole LCV range\*. This is much more than just a warranty as it includes:



- 5 year or 100,000 Mile bumper-to-bumper protection
- 5 Year Nissan Genuine Parts & Accessories Warranty
- 5 Year Roadside Assistance
- Fully transferable

And with service intervals at 24 months or 18,000 miles for new NAVARA, you'll not only have 5 years' peace of mind but also low running costs into the bargain.



### AT NISSAN, YOU BRING OUT THE BEST IN US.

You spark our imagination. You provoke our ingenuity. You inspire us to change the rules and innovate. And at Nissan, innovation is not just about additions and extensions; it's about crossing the line to reinvent the status quo. It's about developing unexpected solutions to satisfy your wildest and most pragmatic desires. At Nissan, we design vehicles, accessories and services that break the mould - making the practical exciting and the exciting practical to offer you a more exhilarating driving experience everyday.

\*5-Year / 100,000 miles (whichever comes first) Manufacturer Warranty for the LCV range (with the exception of e-NV200). The Basic Vehicle Warranty for e-NV200, according to 3.1 of the Warranty Booklet and Maintenance Record, is extended to 5 years (from the warranty start date) / 60,000 miles (whichever comes first). Only vehicles registered on or after 1st November 2016 are eligible for the Extended Warranty. Body parts and paint excluded during year four and year five. Terms and exclusions apply, for further information please see Extended Warranty Terms and Conditions. Apart from the afore-mentioned, all warranty conditions included in the Warranty Booklet and Maintenance Record remain unchanged. Issuer of this Extended Warranty is Nissan International Insurance Ltd. Unlimited mileage for Paintwork, Nissan Genuine Parts & Accessories, Roadside Assistance & Corrosion Warranties. For more details, please refer to Nissan Warranty Booklet.

## CUSTOMER SERVICES



### SPECIALISED NETWORK

NISSAN provides a specialised network of dealerships to support your specific vehicle requirements:

- Pan-European coverage
- Dedicated Sales & After Sales staff
- Competitive financing solutions
- Tailor made conversion offers
- Competitive extended warranty offers to go even beyond Nissan LCV Nissan 5 Year / 100,000 Mile Warranty.
- Test drive of your choice



### AFTERSALES SERVICES

If your car breaks down, it's inconvenient. If your pick-up breaks down, it's a serious blow to your business. Even time allowed for servicing is downtime, when your van isn't earning its keep. At Nissan, we understand these hard business facts. So we do the best to ensure that your van stays where it belongs - working for you, on the road.



### NISSAN SERVICE CONTRACTS AND EXTENDED WARRANTY

For total peace of mind and budget control, you can subscribe to a Nissan Service Contract which will cover your periodic maintenance and Wear & Tear parts for the mileage and period that suits your business best. This way, you can ensure that your new NAVARA is serviced by dedicated Nissan technicians. And for even more serenity, you can get an Extended Warranty to cover possible mechanical and electrical breakdown after the end of your new NAVARA warranty.



### 5 YEAR ROADSIDE ASSISTANCE

- Pan-European coverage for breakdowns, accidents, non-warrantable incidents (such as flat tyres, lost keys, wrong fuel...)
- 24/7, 365 days
- Emergency Call Centre
- Prompt roadside assistance

If this is not possible and your pick-up is still immobilised after a few hours, we will make sure you are provided with a courtesy vehicle as soon as possible or if necessary, overnight accommodation and travel to your onward destination or back to your base. We will also recover your immobilised pick-up.





Innovation  
that excites

# NISSAN NAVARA



REQUEST A TEST DRIVE





# STANDARD EQUIPMENT

THE NISSAN NAVARA raises the bar for style and performance in the pick-up market, combining the best of Nissan's crossover leadership with over 80 years of experience in designing and manufacturing robust and dependable pick-ups. Welcome to the versatile and efficient next generation Nissan pick-up - tough as always, smarter than ever.

## KEY FEATURES THAT COME AS STANDARD

### COMFORT AND CONVENIENCE

- 5" High Definition full colour TFT screen combimeter
- 5 link rear suspension (Double Cab)
- Steering wheel mounted audio controls
- Power steering
- Front electric windows
- Rear electric windows (Double Cab)
- High mounted LED centre brake light
- Trip computer
- Electrically adjustable door mirrors
- Rear ventilation
- 4 way adjustable passenger seat
- Folding rear seats (King Cab)
- Leaf spring rear suspension (King Cab)
- External temperature sensor

### EXTERIOR STYLING

- Tailgate spoiler
- Load restraint hooks
- Mudguards (front and rear)

### AUDIO AND NAVIGATION

- Bluetooth® telephone integration
- 2 speakers (King Cab)
- 4 speakers (Double Cab)
- USB port
- AUX socket for MP3 player
- AM/FM/CD audio system

### INTERIOR STYLING

- 3x 12V power sockets
- Front armrest

### TECHNOLOGY

- Automatic headlights with Follow Me Home
- Electronic Limited-Slip Differential (eLSD) with cut-off
- Stop/Start technology (Manual only)
- Cruise control and speed limiter
- Selective Catalytic Reduction (SCR) system - uses AdBlue® to reduce NOx emissions

### SAFETY AND SECURITY

- ABS with EBD and Brake Assist
- Forward Emergency Braking (Double Cab)
- Vehicle Dynamic Control (VDC)
- Hill Start Assist
- Hill Descent Control (4WD only)
- Daytime Running Lights
- Airbags: 2 x front (steering wheel + top of dash); 2 x curtain (passenger & driver); 2 x seat side (passenger & driver); 1 x knee (driver)
- Passenger airbag cut off switch
- Rear ISOFIX childseat anchorage points (Double Cab)
- 3 adjustable rear head restraints (Double Cab)
- Nissan approved alarm system
- Nissan Anti Theft System immobiliser
- Remote central door locking
- Locking wheel nuts
- Spare wheel lock
- 16" Steel spare wheel

## VISIA

### IN ADDITION TO STANDARD EQUIPMENT

#### EXTERIOR STYLING

- 16" Steel wheels
- Black front bumper (King Cab)
- Body coloured front bumper (Double Cab)
- Black tube rear bumper
- Black front grille
- Black door handles
- Black door mirrors

#### INTERIOR STYLING

- Cloth seats

#### COMFORT AND CONVENIENCE

- Front manual air conditioning (4WD only)
- 6 way adjustable drivers seat

#### TECHNOLOGY

- Manual dimming rear view mirror

#### OPTIONS\*

- C-Channel moveable tiedown points
- Rear differential lock
- Guard frame



Image shown is NAVARA VISIA King Cab with optional C-Channel and Guard Frame system fitted.  
\*Options available at additional cost.  
\*\*Also built as a chassis version without rear load bed. Built to order. Contact your local dealership for further information.



## ACENTA

### IN ADDITION TO VISIA

#### EXTERIOR STYLING

- 16" Alloy wheels
- C-Channel moveable tiedown points
- Body coloured front bumper
- Chrome Daytime Running Light surrounds
- Chrome front grille
- Chrome door handles
- Door step lights
- Chrome wheel nuts
- 6 speakers

#### INTERIOR STYLING

- Chrome interior door handles

#### TECHNOLOGY

- Nissan Intelligent Key
- Start push button

#### OPTIONS\*

- Rear differential lock
- Guard frame



\*Options available at additional cost

## ACENTA+

### IN ADDITION TO ACENTA

#### EXTERIOR STYLING

- 18" Alloy wheels
- Rear privacy glass
- LED door mirror indicators
- Side steps
- Chrome rear step bumper
- Chrome door mirrors

#### SAFETY AND SECURITY

- Front fog lights with chrome surrounds

#### COMFORT AND CONVENIENCE

- Automatic air conditioning with dual zone climate control
- Pollen filter
- Colour reversing camera (shown in rear view mirror)
- Heated door mirrors
- Electric folding door mirrors

#### TECHNOLOGY

- Automatic dimming rear view mirror

#### INTERIOR STYLING

- Leather steering wheel
- Leather gear knob

#### OPTIONS\*

- Rear differential lock



\*Options available at additional cost



## N-CONNECTA

### IN ADDITION TO ACENTA+

#### AUDIO AND NAVIGATION

- NissanConnect 2.0 Satellite Navigation and Entertainment System with:
  - High resolution 7" touchscreen
  - DAB Digital Radio
  - Colour reversing camera (shown in touchscreen)
  - Smartphone App integration
  - Bluetooth® audio streaming
  - Traffic updates

#### OPTIONS\*

- Rear differential lock
- Roof Rails



\*Options available at additional cost

## TEKNA

### IN ADDITION TO N-CONNECTA

#### EXTERIOR STYLING

- Roof rails

#### COMFORT AND CONVENIENCE

- LED headlights
- LED Daytime Running Lights
- 8 way adjustable driver's seat
- Front heated seats

#### TECHNOLOGY

- Rear parking sensors

#### INTERIOR STYLING

- Leather seats\*\*
- Leather handbrake

#### AUDIO AND NAVIGATION

- Around View Monitor - 4 cameras give a bird's eye 360° view of the vehicle

#### OPTIONS\*

- Rear differential lock
- Sunroof



\*Options available at additional cost.  
\*\*Some parts of leather seats may contain artificial leather.



## N-GUARD

### IN ADDITION TO TEKNA

#### EXTERIOR STYLING

- Black 18" alloys
- Black front grille and roof rails
- Black rear bumper and side steps
- Black LED headlight inlays and fog light surrounds
- Black wing mirrors and door handles
- Metallic (M) or Pearlescent (P) paint
  - Storm White (P)
  - Metallic Black (M)
  - Twilight Grey (M)

#### COMFORT AND CONVENIENCE

- Sunroof
- Headlamp washers

#### INTERIOR STYLING

- Part Leather & Cloth seats with yellow stitching
- N-Guard carpet mats
- N-Guard black & yellow side decals

#### OPTIONS\*

- Rear Differential Lock



\*Options available at additional cost

## OFF-ROADER AT32

### IN ADDITION TO TEKNA

#### SAFETY & SECURITY

- Rear Differential Lock
- Increased Ground Clearance (+20 mm)
- Steel underbody protection

#### EXTERIOR STYLING

- 17" Black Alloy Wheels
- 32" Nokian Off-Road Tyres
- Black Side Steps
- Arctic Truck Rear Mud Guards
- Black Wheel Arches
- AT32 exterior badges

#### OPTIONS\*

- Safari Snorkel
- Front Differential Lock
- Full Size Off-Road Spare Wheel & Tyre
- Sunroof



\*Options available at additional cost



## COLOURS

(S) = Solid  
(M) = Metallic (cost option)  
(P) = Pearlescent (cost option)



ALABASTER WHITE (S)



FLAME RED (S)



STORM WHITE (P)\*



STARBURST SILVER (M)



TWILIGHT GREY (M)



METALLIC BLACK (M)



EARTH BRONZE (M)



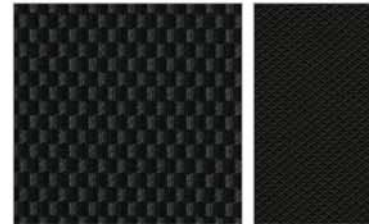
SAVANNAH YELLOW (M)



CAYMAN BLUE (M)

\*Storm White only available on Acenta+, N-Connecta, Tekna and AT32 grade.

## TRIMS



VISIA and ACENTA  
GRAPHITE CLOTH



ACENTA+ and N-CONNECTA  
PREMIUM GRAPHITE CLOTH



TEKNA and OFF-ROADER AT32  
GRAPHITE LEATHER

## WHEELS



VISIA  
16" STEEL WHEELS



ACENTA  
16" ALLOY WHEELS



ACENTA+, N-CONNECTA and TEKNA  
18" ALLOY WHEELS



OFF-ROADER AT32  
17" ALLOY WHEELS

# NAVARA TECHNICAL SPECIFICATION

| MODEL                                       | CHASSIS               |                                      | PICK-UP               |                   |                         |                   | PICK-UP             |                                     |                     |                   |  |
|---|-----------------------|--------------------------------------|-----------------------|-------------------|-------------------------|-------------------|---------------------|-------------------------------------|---------------------|-------------------|--|
|   | KING CAB              |                                      | KING CAB              |                   | DOUBLE CAB              |                   | DOUBLE CAB          |                                     |                     |                   |  |
| Available grades                            | VISIA                 |                                      | VISIA                 | VISIA             | ACENTA                  | VISIA             | ACENTA              | ACENTA+, N-CONNECTA, TEKNA, N-GUARD | OFF-ROADER AT32     |                   |  |
| Engine                                      | 2.3L dCi Single Turbo |                                      | 2.3L dCi Single Turbo |                   | 2.3L dCi Single Turbo   |                   | 2.3L dCi Twin Turbo |                                     | 2.3L dCi Twin Turbo |                   |  |
| Transmission                                | 6 speed manual        |                                      | 6 speed manual        |                   | 6 speed manual          |                   | 6 speed manual      | 7 speed auto                        | 6 speed manual      | 7 speed auto      |  |
| Drivetrain                                  | Part time 4WD         |                                      | 2WD                   | Part time 4WD     |                         | Part time 4WD     |                     | Part time 4WD                       |                     |                   |  |
| Seating capacity                            | persons               | 4                                    | 4                     |                   | 5                       |                   | 5                   |                                     | 5                   |                   |  |
| <b>ENGINE PERFORMANCE &amp; DESCRIPTION</b> |                       |                                      |                       |                   |                         |                   |                     |                                     |                     |                   |  |
| Max engine power                            | PS (kW) @ rpm         | 163 (120) @ 3,750                    | 163 (120) @ 3,750     |                   | 163 (120) @ 3,750       |                   | 190 (140) @ 3,750   |                                     | 190 (140) @ 3,750   |                   |  |
| Max engine torque                           | Nm @ rpm              | 403 @ 1,500-2,500                    |                       | 403 @ 1,500-2,500 |                         | 403 @ 1,500-2,500 |                     | 450 @ 1,500-2,500                   |                     | 450 @ 1,500-2,500 |  |
| Emission class                              |                       | Euro6                                |                       |                   |                         |                   |                     |                                     |                     |                   |  |
| No. of cylinders/ configuration             |                       | 4/in-line                            |                       |                   |                         |                   |                     |                                     |                     |                   |  |
| No. of valves per cylinder/configuration    |                       | 4/DOHC                               |                       |                   |                         |                   |                     |                                     |                     |                   |  |
| Engine displacement                         | cc                    | 2,298                                |                       |                   |                         |                   |                     |                                     |                     |                   |  |
| Compression ratio                           |                       | 15.4                                 |                       |                   |                         |                   |                     |                                     |                     |                   |  |
| Fuel type                                   |                       | Diesel / Biodiesel (B10 max)         |                       |                   |                         |                   |                     |                                     |                     |                   |  |
| Aftertreatment system                       |                       | DOC-DPF                              |                       |                   |                         |                   |                     |                                     |                     |                   |  |
| <b>CHASSIS</b>                              |                       |                                      |                       |                   |                         |                   |                     |                                     |                     |                   |  |
| Frame type                                  |                       | Ladder type                          |                       |                   |                         |                   |                     |                                     |                     |                   |  |
| Front suspension                            |                       | Double wishbone with coil over strut |                       |                   |                         |                   |                     |                                     |                     |                   |  |
| Rear suspension                             |                       | Rigid leaf spring                    | Rigid leaf spring     |                   | 5 link with coil spring |                   |                     |                                     |                     |                   |  |
| Steering system                             |                       | Rack & Pinion Power Assisted         |                       |                   |                         |                   |                     |                                     |                     |                   |  |
| Turning circle diameter, kerb to kerb       | m                     | 11.8                                 | 11.8                  | 12.4              | 12.4                    |                   | 12.4                |                                     |                     |                   |  |
| Brake type (front/rear)                     |                       | 296mm Ventilated Disc / 295mm Drum   |                       |                   |                         |                   |                     |                                     |                     |                   |  |
| Wheel size                                  |                       | 16 x 6.0J (55)                       | 16 x 6.0J (55)        | 16 x 7.0J (45)    | 16 x 7.0J (45)          | 16 x 7.0J (45)    | 18 x 7.0J (45)      |                                     | 17 x 8.0J (25)      |                   |  |
| Tyre size                                   |                       | 205 R16C                             | 205 R16C              | 255/70 R16        | 255/70 R16              | 255/70 R16        | 255/60 R18          |                                     | 275/70 R17          |                   |  |
| <b>FUEL CONSUMPTION</b>                     |                       |                                      |                       |                   |                         |                   |                     |                                     |                     |                   |  |
| Fuel tank capacity                          | litres                | 73                                   |                       |                   |                         |                   |                     |                                     |                     |                   |  |
| AdBlue Tank capacity                        | litres                | 17                                   |                       |                   |                         |                   |                     |                                     |                     |                   |  |
| Fuel consumption                            | Combined (mpg)        | **                                   | 46.3                  | 44.9              | 44.9                    |                   | 44.9                | 41.0                                | 44.9                | 41.0              |  |
|   | Extra-Urban (mpg)     | **                                   | 48.7                  | 46.3              | 46.3                    |                   | 47.1                | 47.9                                | 47.1                | 47.9              |  |
|   | Urban (mpg)           | **                                   | 43.5                  | 41.6              | 41.6                    |                   | 41.0                | 32.5                                | 41.0                | 32.5              |  |
| CO2 emissions                               | Combined (g/km)       | **                                   | 159                   | 167               | 167                     |                   | 167                 | 183                                 | 167                 | 183               |  |

\*Without driver, with full fuel tank. Will vary with grade-standard equipment and option/accessory equipment.  
\*\*Dependent on conversion.

| MODEL                                 | CHASSIS                          |          | PICK-UP               |               |                       |               | PICK-UP             |                                     |                              |              |
|---------------------------------------|----------------------------------|----------|-----------------------|---------------|-----------------------|---------------|---------------------|-------------------------------------|------------------------------|--------------|
|                                       | KING CAB                         |          | KING CAB              |               | DOUBLE CAB            |               | DOUBLE CAB          |                                     |                              |              |
| Available grades                      | VISIA                            |          | VISIA                 | VISIA         | ACENTA                | VISIA         | ACENTA              | ACENTA+, N-CONNECTA, TEKNA, N-GUARD | OFF-ROADER AT32              |              |
| Engine                                | 2.3L dCi Single Turbo            |          | 2.3L dCi Single Turbo |               | 2.3L dCi Single Turbo |               | 2.3L dCi Twin Turbo |                                     | 2.3L dCi Twin Turbo          |              |
| Transmission                          | 6 speed manual                   |          | 6 speed manual        |               | 6 speed manual        |               | 6 speed manual      | 7 speed auto                        | 6 speed manual               | 7 speed auto |
| Drivetrain                            | Part time 4WD                    |          | 2WD                   | Part time 4WD |                       | Part time 4WD |                     | Part time 4WD                       |                              |              |
| <b>PERFORMANCE</b>                    |                                  |          |                       |               |                       |               |                     |                                     |                              |              |
| Max speed                             | mph                              | **       | 107                   |               | 107                   |               | 114                 | 112                                 | 114                          | 112          |
| Acceleration                          | 0-62mph (seconds)                | **       | 11.6                  | 12.0          |                       | 12.0          |                     | 10.8                                |                              | 10.8         |
| Max ascending grade                   | %                                | Over 30% |                       |               |                       |               |                     |                                     |                              | Over 30%     |
| Wading depth                          | mm                               | 600      |                       |               |                       |               |                     |                                     | 600<br>800 (with Snorkel***) |              |
| <b>VEHICLE DIMENSIONS</b>             |                                  |          |                       |               |                       |               |                     |                                     |                              |              |
| Overall length                        | mm                               | **       | 5,225                 | 5,255         | 5,300                 | 5,330         |                     | 5,330                               |                              |              |
| Overall width                         | w/o mirrors (mm)                 | 1,790    | 1,790                 | 1,850         | 1,850                 |               | 1,890               |                                     |                              |              |
|                                       | with mirrors (mm)                | 2,075    | 2,075                 |               | 2,075                 |               | 2,085               |                                     | 2,085                        |              |
| Overall height                        | mm                               | 1,790    | 1,780                 | 1,780-1,790   | 1,805-1,840           |               | 1,805-1,840         |                                     | 1,880                        |              |
| Wheelbase                             | mm                               | 3,150    |                       |               |                       |               |                     |                                     |                              |              |
| Overhangs                             | Front (mm)                       | 870      |                       |               |                       |               |                     |                                     |                              |              |
|                                       | Rear (mm)                        | **       | 1,205                 | 1,205-1,235   | 1,280                 | 1,310         |                     | 1,310                               |                              |              |
| Track                                 | Front & Rear (mm)                | 1,550    | 1,550                 | 1,550-1,570   | 1,570                 |               | 1,570               |                                     |                              |              |
| Min. ground clearance                 | mm                               | 196      | 205                   | 198-213       | 224-228               |               | 224                 |                                     | 243                          |              |
| Approach angle                        | °                                | 29.0     | 30.0                  | 30.0-31.0     | 32.0                  |               | 35.0                |                                     |                              |              |
| Departure angle                       | °                                | 26.0     | 25.0                  | 25.0-26.0     | 25.0                  |               | 25.7                |                                     |                              |              |
| Breakover angle                       | °                                | **       | 21.4                  | 21.2-22.1     | 22.1-22.2             |               | 22.2                |                                     | 24.0                         |              |
| <b>REAR BED DIMENSIONS (interior)</b> |                                  |          |                       |               |                       |               |                     |                                     |                              |              |
| Length                                | Top / Floor (mm)                 | N/A      | 1,750 / 1,788         |               | 1,537 / 1,578         |               | 1,537 / 1,578       |                                     |                              |              |
| Width                                 | Max. / Between wheel arches (mm) | N/A      | 1,560 / 1,130         |               | 1,560 / 1,130         |               | 1,560 / 1,130       |                                     |                              |              |
| Tailgate height                       | mm                               | N/A      | 474                   |               | 474                   |               | 474                 |                                     |                              |              |
| Bed floor height from ground          | mm                               | N/A      | 795                   | 800-810       | 805-815               |               | 815                 |                                     | 815                          |              |
| <b>WEIGHTS AND CAPACITIES</b>         |                                  |          |                       |               |                       |               |                     |                                     |                              |              |
| Gross vehicle weight                  | kg                               | 3,035    | 3,035                 |               | 3,045                 |               | 3,045               |                                     |                              |              |
| Min kerb weight*                      | kg                               | 1,814    | 1,879                 | 1,961         |                       | 1,986         |                     | 1,998                               | 1,991                        | 2,018        |
| Max payload**                         | kg                               | 1,221    | 1,156                 | 1,074         |                       | 1,059         |                     | 1,047                               | 1,054                        | 1,025        |
| Towing capacity                       | kg                               | 3,500    | 3,035                 | 3,500         |                       | 3,500         |                     | 3,500                               |                              |              |
| Gross train weight                    | kg                               | 6,000    |                       |               |                       |               |                     |                                     |                              |              |
| Max vertical force on towball         | kg                               | 140      | 120                   | 140           |                       | 140           |                     | 140                                 |                              |              |
| Max roof load                         | kg                               | N/A      | N/A                   |               | N/A                   | N/A           | 56 <sup>†</sup>     |                                     | 56 <sup>†</sup>              |              |

\*When roof rails are fitted. \*\*Individual payload may vary based on selection of additional specification. \*\*\* When optional Safari Snorkel is selected.



## PRICELIST

| Body             | Grade           | Engine         | Transmission | Drivetrain | Basic Price<br>£ | VAT<br>£  | Total Retail<br>£ | On The Road<br>Price<br>£ |
|------------------|-----------------|----------------|--------------|------------|------------------|-----------|-------------------|---------------------------|
| Chassis King Cab | VISIA           | 2.3L dCi 163PS | 6 Manual     | 4WD        | 21,000.00        | 4,200.00  | 25,200.00         | 25,515.00                 |
| King Cab         | VISIA           | 2.3L dCi 163PS | 6 Manual     | 2WD        | 20,500.00        | 4,100.00  | 24,600.00         | 24,915.00                 |
|                  |                 |                | 6 Manual     | 4WD        | 21,300.00        | 4,260.00  | 25,560.00         | 25,875.00                 |
|                  | ACENTA          | 6 Manual       | 4WD          | 22,250.00  | 4,450.00         | 26,700.00 | 27,015.00         |                           |
| Double Cab       | VISIA           | 2.3L dCi 163PS | 6 Manual     | 4WD        | 22,150.00        | 4,430.00  | 26,580.00         | 26,895.00                 |
|                  | ACENTA          |                | 6 Manual     | 4WD        | 23,100.00        | 4,620.00  | 27,720.00         | 28,035.00                 |
|                  | ACENTA+         | 2.3L dCi 190PS | 6 Manual     | 4WD        | 25,300.00        | 5,060.00  | 30,360.00         | 30,675.00                 |
|                  |                 |                | 7 Automatic  | 4WD        | 26,900.00        | 5,380.00  | 32,280.00         | 32,595.00                 |
|                  | N-CONNECTA      | 2.3L dCi 190PS | 6 Manual     | 4WD        | 26,025.00        | 5,205.00  | 31,230.00         | 31,545.00                 |
|                  |                 |                | 7 Automatic  | 4WD        | 27,625.00        | 5,525.00  | 33,150.00         | 33,465.00                 |
|                  | TEKNA           | 2.3L dCi 190PS | 6 Manual     | 4WD        | 27,675.00        | 5,535.00  | 33,210.00         | 33,525.00                 |
|                  |                 |                | 7 Automatic  | 4WD        | 29,275.00        | 5,855.00  | 35,130.00         | 35,445.00                 |
|                  | N-GUARD         | 2.3L dCi 190PS | 6 Manual     | 4WD        | 28,575.00        | 5,715.00  | 34,290.00         | 34,605.00                 |
|                  |                 |                | 7 Automatic  | 4WD        | 30,175.00        | 6,035.00  | 36,210.00         | 36,525.00                 |
|                  | OFF-ROADER AT32 | 2.3L dCi 190PS | 6 Manual     | 4WD        | 33,175.00        | 6,635.00  | 39,810.00         | 40,125.00                 |
|                  |                 |                | 7 Automatic  | 4WD        | 34,775.00        | 6,955.00  | 41,730.00         | 42,045.00                 |
| N-GUARD AT32     | 2.3L dCi 190PS  | 7 Automatic    | 4WD          | 35,675.00  | 7,135.00         | 42,810.00 | 43,125.00         |                           |

The Basic prices excludes VAT but includes delivery to the dealership and number plates. The Retail on the Road price includes VAT, delivery to the dealership, number plates, 12 months Government Vehicle Excise Duty (£260 for Light Commercial Vehicles) and Government First Registration Fee of £55.

## DPF FILTER

### WHAT IS A DPF?

A **DIESEL PARTICULATE FILTER (DPF)** forms part of the vehicle's exhaust in order to limit the amount of soot particles contained within the exhaust gas passing into the atmosphere.

When the amount of soot in the filter reaches a specific level, this needs to be reduced in order to maintain the filter's function.

This reduction is called '**REGENERATION**' and is carried out by the vehicle's electronic control system which raises the exhaust gas temperatures during normal driving. If a vehicle requires frequent regeneration due to driving style, these high temperatures cause the engine oil to degrade more quickly.

However, from 2011 onwards Nissan vehicles were fitted with an **OIL CHANGE SUPERVISOR (OCS)** as well as a DPF to help monitor the condition of the oil and ensure the quality never falls below a minimum level.

### WHAT IF I ONLY DRIVE SHORT JOURNEYS?

If the vehicle is only driven for short journeys, or at low speed, then it may not be possible for regeneration to occur. In this situation, the below warning lights will be illuminated on your dashboard.



Please refer to your Owner's Manual for further information.

After seeing these warning lights you need to drive, as soon as possible, above 40mph until the light goes out. This can take up to 30 minutes depending on the amount of soot collected in the filter.

### WHAT IF I IGNORE THEM?

If you continue to drive at low speeds the exhaust gas temperatures cannot rise, so regeneration cannot occur. In this instance, a combination of the below warning lights will be illuminated on you dashboard.



In this case, and in order to protect the engine and DPF Filter, the vehicle will require '**SERVICE REGENERATION**' which can only be carried out by a workshop equipped with Nissan diagnostic equipment. You will need to go to your nearest Nissan dealer in case the oil and filter needs to be replaced.

As '**SERVICE REGENERATION**' is not a manufacturing fault, so the cost will **NOT** be covered under warranty.

# CO2 MASS EMISSIONS AND VEHICLE EXCISE DUTY

| VEHICLE | ENGINE                      | TRANSMISSION | BODY STYLE  | EMISSION LEVEL | CO <sub>2</sub> MASS EMISSIONS G/KM |              | 12 MONTHS VED<br>£ |              |
|---------|-----------------------------|--------------|-------------|----------------|-------------------------------------|--------------|--------------------|--------------|
|         |                             |              |             |                | ≤ 17" ALLOYS                        | ≥ 18" ALLOYS | ≤ 17" ALLOYS       | ≥ 18" ALLOYS |
| Navara  | 2.3L dCi Single Turbo 160PS | 6 manual     | 2WD Pick-Up | EURO6          | 159                                 | -            | 250                |              |
|         |                             | 6 manual     | 4WD Pick-Up | EURO6          | 167                                 | -            | 250                |              |
|         | 2.3L dCi Twin Turbo 190PS   | 6 manual     |             | EURO6          | -                                   | 167          | 250                |              |
|         |                             | 7 auto       | EURO6       | -              | 183                                 | 250          |                    |              |

\* Determined by CO<sub>2</sub> emissions figure and fuel type - see "Further information". NB. Navara VED is fixed at £240 as it is considered a commercial vehicle.

\*\* Juke, Pulsar, Qashqai and All figures are subject to final homologation.

\*\*\* On New Qashqai CO<sub>2</sub> emissions are the same across the range irrespective of wheel size chosen



# NISSAN INSURANCE

Nissan Insurance has been designed to help Nissan drivers get the most from their cover, boasting the following benefits:

- Use of Nissan Approved Repairers and franchised trained technicians
- Use of only Nissan genuine parts for repairs
- Guaranteed repair for 3 years
- New car replacement, if your vehicle is written off when under 12 months old
- Cover provided for driving in the EU, subject to a maximum 30 days per year
- Personal accident benefit up to £5,000
- Up to £100 personal belongings cover
- £300 towards replacement locks if your keys are lost or stolen

Call Nissan Insurance today on 0344 335 3780

Calls charged at the same rate as local 01 and 02 numbers and will be included in inclusive call packages from mobiles. Lines are open Monday to Friday 9am-7pm and Saturday 9am-5pm.

## Terms and Conditions

Quotations are subject to underwriting terms and acceptance criteria.

Nissan Insurance is arranged by Europa Group Ltd trading as Nissan Insurance Services on behalf of Maiden Global Holdings Ltd (registered in England with company number 07324422) Registered office: Albion House, Valley Business Centre, Gordon Road, High Wycombe, HP13 6EQ. Authorised and regulated by the Financial Conduct Authority. Financial Services Register number 555397. Europa Group Limited is authorised and regulated by the Financial Conduct Authority. Financial Services Register No. 309794. Registered as a limited company in England and Wales No. 3279177. Registered office: Europa House, Midland Way, Thornbury, Bristol BS35 2JX.

## FURTHER INFORMATION

**On The Road Prices.** On The Road Price includes 12 months Government Vehicle Excise Duty (VED) determined by CO<sub>2</sub> emissions figure and fuel type, £55 Government First Registration Fee, number plates and delivery to the Nissan Dealership.

VED rates are determined by the vehicles CO<sub>2</sub> emissions figures and by the type of fuel used.

The following table applies to all new car registrations:

| VED Band              |   | 0     | 1-50   | 51-75   | 76-90   | 91-100  | 101-110 | 111-130 | 131-150 | 151-170 | 171-190   | 191-225   | 226-255   | over 255  |
|-----------------------|---|-------|--------|---------|---------|---------|---------|---------|---------|---------|-----------|-----------|-----------|-----------|
| Tax Year 2017 to 2018 | CO <sub>2</sub> Emissions Figure (g/km)*  |       |        |         |         |         |         |         |         |         |           |           |           |           |
|                       | First Year Rate                           | £0.00 | £10.00 | £25.00  | £100.00 | £120.00 | £140.00 | £160.00 | £200.00 | £500.00 | £800.00   | £1,200.00 | £1,700.00 | £2,000.00 |
| Tax Year 2018 to 2019 | CO <sub>2</sub> Emissions Figure (g/km)*  |       |        |         |         |         |         |         |         |         |           |           |           |           |
|                       | First Year Rate                           | £0.00 | £10.00 | £25.00  | £105.00 | £125.00 | £145.00 | £165.00 | £205.00 | £515.00 | £830.00   | £1,240.00 | £1,760.00 | £2,070.00 |
|                       | First Year Rate for Diesel Passenger Cars | £0.00 | £25.00 | £105.00 | £125.00 | £145.00 | £165.00 | £205.00 | £515.00 | £830.00 | £1,240.00 | £1,760.00 | £2,070.00 | £2,070.00 |

\* g/km = grammes of CO<sub>2</sub> per kilometre travelled.

All Light Commercial Vehicles will have a standard VED rate of £240 per annum.

### VAT and VED

VAT application is based on current HMRC guidelines, please check with HMRC for specific guidance for the vehicle you are purchasing.

VED is determined by the DVLA, please check with the DVLA for specific guidance for the vehicle you are purchasing.

**Optional equipment.** This price list features a selection from the full range of optional equipment, be they standard, dealer fit or factory options.

For further information and details of the full range, please contact your local Authorised Nissan Dealer.

Nissan's commitment to you includes all of the following benefits – some of which may be the reasons why you chose your new Nissan in the first place:

**Manufacturer's warranty** – Nissan's comprehensive warranty provides cover for your new Nissan from defects in materials or workmanship. Your vehicle is covered in all European Countries where Authorised Nissan Dealers are located. If your vehicle becomes inoperative due to a warrantable defect a towing service, when necessary, to the Authorised Nissan Dealer is covered. If a warrantable defect abroad takes more than six hours to repair, the Touring Assistance Programme will pay for a hotel room or rental car up to a certain maximum. The paint warranty covers painted body parts (excluding the underbody) for three years regardless of mileage driven. For further details please contact your local Authorised Nissan Dealer. Petrol and diesel engine cars - Three-year/60,000 miles. Petrol and diesel engine LCVs and Navara - Five-year/100,000 miles.

**LEAF and e-NV200** – Nissan LEAF and e-NV200 offer a 5-year / 60,000 mile warranty on all EV dedicated components, including the lithium-ion battery, and a 3-year / 60,000 mile warranty on standard components. This is with the expression of e-NV200 which offers a 5-year / 60,000 mile warranty on mechanical components and corrosion\*. The Nissan LEAF and e-NV200 lithium-ion battery state of health guarantee protects against battery capacity loss (less than 9 bars out of 12) as shown on LEAF and e-NV200's capacity gauge for a period of 5 years / 60,000 miles. For LEAF and e-NV200 flex customers, the battery state of health guarantee applies for the duration of the battery lease.

\*The Basic Vehicle Warranty for e-NV200, according to 3.1 of the Warranty Booklet and Maintenance Record, is extended to 5 years (from the warranty start date) / 60,000 miles (whichever comes first). Only vehicles registered on or after 1st November 2016 are eligible for the Extended Warranty. Body parts and paint excluded during year four and year five. Terms and exclusions apply, for further information please see Extended Warranty Terms and Conditions. Apart from the afore-mentioned, all warranty conditions included in the Warranty Booklet and Maintenance Record remain unchanged. Issuer of this Extended Warranty is Nissan International Insurance Ltd



## FURTHER INFORMATION

Nissan European Roadside Assistance is provided for the period of your new vehicle manufacturer warranty.

Roadside, Recovery and At Home products are provided by RAC Motoring Services (Registered No. 1424399, Registered Office: 8 Surrey Street, Norwich, NR1 3NG). RAC Motoring Services (in respect of insurance mediation activities only) is authorised and regulated by the Financial Conduct Authority and within the jurisdiction of the Financial Ombudsman Service and Financial Services Compensation Scheme.

Onward Travel and European Cover are underwritten by RAC Insurance Limited (Registered No. 1424399, Registered Office: 8 Surrey Street, Norwich, NR1 3NG). RAC Insurance Limited is authorised and regulated by the Financial Conduct Authority and within the jurisdiction of the Financial Ombudsman Service and Financial Services Compensation Scheme.

Nissan EV Pan-European Roadside Assistance is provided by AXA for 3 years or 60,000 miles, whichever comes first.

For LEAF and e-NV200 Flex (battery lease) customers, the Nissan EV Pan-European Roadside Assistance will cover you for the duration of your battery lease agreement should your Nissan EV run out of battery charge. For any other repair work, the basic warranty clause still applies. Benefits and Services are provided by AXA Assistance. AXA Assistance is authorised and regulated by the Financial Conduct Authority (FCA).

FCA Register number 439069. AXA Assistance UK Limited (registration 2638890) 106 - 118 Station Road, Redhill Surrey RH1 1PR

**Peace of mind** - we always guarantee our workmanship, and all genuine Nissan replacement parts and accessories have a minimum of one year's warranty. Accessory prices are subject to change, please see your nearest dealership for the most up to date prices. Our technicians have been trained by Nissan to work on your vehicle and they are the Nissan specialists. They use the latest equipment to ensure your vehicle is given the best treatment. Accessory prices are subject to change, please see your nearest dealership for the most up to date prices. Our technicians have been trained by Nissan to work on your vehicle and they are the Nissan specialists. They use the latest equipment to ensure your vehicle is given the best treatment. Accessory prices are subject to change, please see your nearest dealership for the most up to date prices.

**Recyclability** - we take all our environmental responsibilities very seriously - innovation today comes with a deep respect for the environment. Our engines are now much more unobtrusive and their emissions have been considerably reduced. All our vehicles are designed with recycling in mind.

**Nissan Finance** offers a wide range of flexible finance schemes to meet the needs of both our retail and business customers. Preferences, Hire Purchase, Nissan Contract Hire and Finance Lease, all offer the in-built flexibility to make the package tailor-made to meet your individual needs. We also provide added security to your finance agreement with a comprehensive range of payment protection plans. Ask your local Authorised Nissan Dealer for details.

**The Nissan Motability Programme** developed in association with the registered charity Motability enables those with difficulty getting around to obtain selected models on preferential terms.

All prices in this list are quoted in pounds sterling. Value Added Tax (VAT) has been calculated at 20%.

While all reasonable effort has been made to ensure the accuracy of the information provided, due to Nissan's policy of continuous product improvement, all particulars Contained are subject to constant revision and Nissan reserves the right to change, alter or modify, among other things, specifications, colours and prices of models without notice at any time. Accordingly you should consult your local Authorised Nissan Dealer for the exact introduction dates of all models and for the most up-to-date information.

Images shown are for guidance purposes. In some instances photos are of non UK specification vehicles and do not represent a specific model, grade or offer.

[www.nissan.co.uk/navara](http://www.nissan.co.uk/navara)

Follow Nissan NAVARA on:



\*5-Year / 100,000 miles (whichever comes first) Manufacturer Warranty for the LCV range (with the exception of e-NV200. The Basic Vehicle Warranty for e-NV200, according to 31 of the Warranty Booklet and Maintenance Record, is extended to 5 years (from the warranty start date) / 60,000 miles (whichever comes first). Only vehicles registered on or after 1st November 2016 are eligible for the Extended Warranty. Body parts and paint excluded during year four and year five. Terms and exclusions apply, for further information please see Extended Warranty Terms and Conditions. Apart from the afore-mentioned, all warranty conditions included in the Warranty Booklet and Maintenance Record remain unchanged. Issuer of this Extended Warranty is Nissan International Insurance Ltd.

Every effort has been made to ensure that the content of this publication is correct at the time of going to press (May 2019). This brochure has been produced featuring prototype vehicles exhibited at motor shows. In accordance with the company's policy of continuously improving its products, Nissan Europe reserves the right to change at any time the specification and the vehicles described and shown in this publication. Nissan dealers will be informed of any such modifications as quickly as possible. Please check with your local Nissan dealer to receive the most up-to-date information. Because of the limitations of the printing processes used, the colours shown in this brochure may differ slightly from the actual colours of the paint and interior trim materials used. All rights reserved. Reproduction in whole or part of this brochure without the written permission of Nissan Europe is forbidden.

This brochure is made from chlorine free paper – MY16 NAVARA FULL BROCHURE RHD 05/2019 – Printed in EU. Created by DESIGNORY, France and produced by egv worldwide, France – Tel: +33 1 49 09 25 35. Part Number: 99999 54472



[REQUEST A TEST DRIVE](#)