



GIULIETTA



FUEL YOUR INSTINCT

The Alfa Giulietta. Prepare to be seduced.

Agility. Cutting-edge MacPherson front suspension and Multilink rear suspension, ideal for handling corners with unparalleled grip and superior driving comfort.

Fun. Dual Pinion Active Steering for an exhilarating driving experience.

Flexibility. 6-speed manual or automatic transmission with the ALFA TCT Twin Clutch Transmission, for more efficient and faster shifting, with a continuous torque output.

Technology and sportiness. Alfa™ D.N.A. is the exclusive driving mode selector which perfectly adapts the vehicle's performance to suit both the driver's style and road conditions.

DESIGN & FUNCTIONALITY

- Three-spoke leather steering wheel with central aluminium insert inspired by the Alfa Romeo grille
- Clean contemporary style dashboard with driver focused Uconnect™ colour touchscreen infotainment system
- High quality Italian upholstery with matching door panel and dashboard inserts
- Sporty front seats with enveloping and supportive design
- Available in cloth, fabric and Alcantara®, leather and Alcantara® or full sports leather upholsteries
- Choice of 11 exterior colours including Matte Magnesium Grey and Tri-Coat Competizione Red paint

ALFA D.N.A.

Derived from racing technology, Alfa D.N.A. is the exclusive Alfa Romeo driving mode selector which perfectly adapts the vehicle's performance to suit both the driver's style and road conditions. There is a choice of three modes: **DYNAMIC** which optimises performance, **NATURAL** for optimum fuel economy and **ALL-WEATHER** for tackling bad weather and low grip conditions. It's simple and intuitive, just flick the switch near the gear knob to change the setup of the engine, brakes, steering and accelerator to suit the driving conditions.

ALFA TCT

This is the innovative twin dry clutch semi-automatic transmission, consisting of two gear boxes in parallel that allow the next gear to engage while the previous one is still engaged. It therefore offers continuous torque delivery without losing power when shifting gears, making them faster and slicker. The result is a driving comfort and sporty feel that far surpasses those offered by traditional automatic transmissions, coupled with improved efficiency and lower fuel consumption.

INFOTAINMENT

An advanced multimedia system that integrates all of the vehicle's technological functions in a single device. Even easier, you can operate the colour touchscreen with the touch of a finger or simply your voice thanks to its voice recognition. The Uconnect™ 5" colour touchscreen allows you to manage the DAB radio, media player (via USB or Aux-In) and phone* (Bluetooth® hands free with SMS reader). The Uconnect™ 6.5" Radio Nav offers the additional feature of a GPS navigation system with preloaded 3D maps. New Tech Pack offers upgraded 7" screen with Apple CarPlay & Android Auto functionality, in addition to reversing camera and HDMI port.

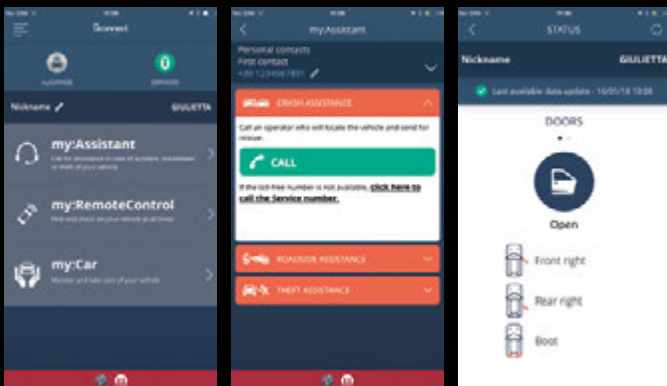
*List of compatible mobile phones is available online at alfaromeo.co.uk





ADVANCED TECHNOLOGY

The Giulietta has the innovative Uconnect™ touch-screen multimedia system with Bluetooth®, audio streaming, USB connector, voice commands and SMS Reader. The latest update is the Uconnect™ Live services that make your driving experience simple and enjoyable. Download the app onto your Smartphone. Arrive at destinations with TomTom Live services*. Monitor savings, consumption and emissions with the applications Eco:Drive and my:Car. Stream music with Deezer and TunIn, and share the trip with friends on Facebook and Twitter. The exclusive Alfa Performance lets the driver monitor vehicle parameters, measure their performance and get real-time driving advice. Use your smartphone while driving in an innovative and safe way, thanks to the Mopar® Connect 7" radio by Alpine compatible with Apple CarPlay and Android Auto™. With Apple CarPlay all your favourite apps can be viewed and used on the screen, exactly like on your iPhone. Designed for the safest driving experience whilst staying connected, Android Auto™ delivers integrated steering wheel and voice commands.



MOPAR CONNECT

With Mopar® Connect, the driver is always connected with their vehicle thanks to an embedded SIM, GPS and accelerometer. Remote assistance and control services are combined to guarantee increased safety on the road, complete peace of mind and easier vehicle care, all simply managed by Uconnect™ LIVE mobile app, that can be downloaded from Play Store (Android) and App Store (Apple).



Through the Uconnect™ LIVE app, drivers with vehicles equipped with the Mopar® Connect will be able to:

- receive instant support in case of crash or breakdown;
- receive real-time alerts in case of unexpected movement of the car or when the car alarm is triggered;
- locate the car in a crowded car park;
- check the vehicle doors status;
- check the vehicle status directly from home before leaving for a trip;
- monitor the use of the vehicle;
- receive smart notifications as a reminder to check if the back seats are still occupied.

ALFA GIULIETTA





ALFA GIULIETTA

Alfa Romeo Giulietta is available with:

1.4 TB 120hp Petrol Manual



OTR PRICE

1.4 TB 120hp Giulietta

£20,755



GIULIETTA

16" Turbine design alloy wheels with 205/55 R16 tyres

6 Airbags - driver, passenger, front side & window

60/40 split folding rear seats

Alfa code immobiliser

Alfa D.N.A. (Vehicle's driving mode selector)

Body coloured bumpers

Electrically heated and adjustable body coloured wing mirrors

Electronic key with remote central locking and boot release

Electronic Q2 differential

Front airbag deactivation on passenger's side

Front and rear electric windows

Giulietta cloth upholstery

Height adjustable driver seat

Isofix attachments for child seat protection

Leather steering wheel with phone and radio controls

LED Daytime Running Lights

Manual climate control

Matte black trim inserts

Multifunctional display and trip computer

Rear cluster LED lights

Rear spoiler

Safe lock

Space saver 16" steel spare wheel

Sports dials with red illumination

Start&Stop technology

TPMS (Tyre Pressure Monitoring System)

Uconnect™ 5" colour touchscreen infotainment system with:

- 6 speakers

- Bluetooth® hands-free system

- CD player, USB, Aux-in or Bluetooth® audio streaming

- DAB Radio

- LIVE services for internet access

- Smartphone connectivity

- Voice commands and SMS reader (text to speech)

VDC (ABS + ASR + EBD + Brake Assistant) with Hill Holder



Giulietta Cloth Upholstery
Black/Antracite

ALFA GIULIETTA SPORT

Alfa Romeo Giulietta Sport is available with:

1.4 TB 120hp Petrol Manual

1.6 JTDM-z 120hp Diesel Manual



OTR PRICE

1.4 TB 120hp Sport	£22,005
1.6 JTDM-z 120hp Sport	£22,995



SPORT

As Giulietta plus:

- 17" 5-hole design alloy wheels with 225/45 R17 tyres (5YN)
- Alarm system
- Cruise control
- Dark tinted rear windows
- Darkened headlights
- Darkened interior headlining
- Diesel Particulate Filter (DPF) - Diesel only
- Enlarged sports exhaust finisher
- Front and rear DAM with red trim
- Front armrest with storage compartment
- Front Fog lights
- Rear Parking Sensors
- Satin chrome door handles
- Side Skirts and rear spoiler
- Space saver steel wheel (for 17" and 18" wheels)



Giulietta Cloth Upholstery
Black/Antracite



Sports Leather
Black

ALFA GIULIETTA SUPER

Alfa Romeo Giulietta Super is available with:

- 1.4 TB 120hp Petrol Manual
- 1.6 JTDM-2 120hp Diesel Manual
- 1.6 JTDM-2 120hp Diesel ALFA TCT



OTR PRICE

1.4 TB 120hp Super	£22,005
1.6 JTDM-2 120hp Super	£22,995
1.6 JTDM-2 120hp ALFA TCT Super	£24,395



SUPER

As Giulietta plus:

- 16" 7-hole design alloy wheels with 205/55 R16 tyres
- Alarm system
- Competizione cloth upholstery
- Cruise control
- Diesel Particulate Filter (DPF) - Diesel only
- Dual zone automatic climate control
- Front armrest with storage compartment
- Front fog lights
- Rear parking sensors
- Satin finish wing mirrors
- Sports dials with white illumination
- Storage pockets behind front seats



Competizione Cloth Upholstery
Black



Sports Leather
Black



Sports Leather
Red



Sports Leather
Tan

ALFA GIULIETTA

VERSION	Version Code	Basic Price	VAT	Retail Price	OTR Charges	Total OTR
1.4 TB 120hp Giulietta	BSV	£16,274.56	£3,254.91	£19,529.47	£1,225.53	£20,755.00
1.4 TB 120hp Sport	BSV	£17,316.23	£3,463.25	£20,779.48	£1,225.53	£22,005.00
1.6 JTDM-z 120hp Sport	BSW	£18,407.89	£3,681.58	£22,089.47	£905.53	£22,995.00
1.4 TB 120hp Super	C5V	£17,316.23	£3,463.25	£20,779.48	£1,225.53	£22,005.00
1.6 JTDM-z 120hp Super	C5W	£18,407.89	£3,681.58	£22,089.47	£905.53	£22,995.00
1.6 JTDM-z 120hp ALFA TCT Super	C5X	£19,574.56	£3,914.91	£23,489.47	£905.53	£24,395.00



PRICING & PERFORMANCE

ENGINES	Start&Stop	Engine Capacity (CC)	HP	0-62 mph (sec)	Top Speed (mph)	Insurance Group	Emissions CO ₂ (g/km)	WLTP Combined mpg Low (l/100km)	WLTP Combined mpg High (l/100km)	BIK (Benefit in Kind)
1.4 TB 120hp Giulietta/Sport/Super	STD	1368	120	9.4	121	15E	164	36.7 (7.7)	32.8 (8.6)	36%
1.6 JTDM→ 120hp Sport/Super	STD	1598	120	10	121	17E	123	49.6 (5.7)	47.1 (6.0)	32%
1.6 JTDM→ 120hp ALFA TCT Super	STD	1598	120	10.2	121	17E	125	50.4 (5.6)	47.1 (6.0)	33%



Fuel consumption figures determined on the basis of the new WLTP test procedure as per Regulation (EU) 2017/1347. CO₂ figures, based on the outgoing test cycle (NEDC), will be used to calculate vehicle tax on first registration. Only compare fuel consumption and CO₂ figures with other cars tested to the same technical procedures. These figures may not reflect real life driving results, which will depend upon a number of factors including the accessories fitted (post-registration), variations in weather, driving styles and vehicle load.

For further information, please visit www.alfaromeo.co.uk/alfa-romeo-world/la-meccanica-delle-emozioni/certification-wltp or contact your local retailer.

INTERIOR	GIULIETTA	SPORT	SUPER	CODE
Giulietta cloth upholstery	●	●	–	–
Competizione cloth upholstery	–	–	●	–
Sports leather upholstery	–	£1550 ⁵	£1550 ⁴	211/212
Rear armrest with storage compartment, third rear head restraint and through-load system	£320	£320	£320	275
Front armrest	£160	●	●	132
Height adjustable passenger seat	£160	£160	£160	454
Electrically adjustable front seats with electric lumbar adjustment and memory setting on driver's side	–	–	£1250 ^{6/7}	177/40Y
Electric lumbar adjustment on driver and passenger seats	–	£320 ⁹	£320 ⁹	40Y
Heated front seats	£260	£260	£260	452
Aluminium sports pedals	£160	£160	£160	4CS
Aluminium kick plates	£100	£100	£100	018
Floor mats	●	●	●	396
Smoking kit	£80	£80	£80	989

SAFETY	GIULIETTA	SPORT	SUPER	CODE
Bluetooth® hands-free system with voice recognition and steering wheel controls	●	●	●	–
Rear parking sensors and multifunctional display	£260	●	●	52B/4GF
Front and rear parking sensors	–	£195	£195	508
TPMS (Tyre Pressure Monitoring System)	●	●	●	–
Dual zone automatic climate control	£450	£450	●	140
Cruise control	£260	●	●	416
Headlight washer system	–	£210	£210	102
Bi-Xenon adaptive front headlights with headlight washer system	–	£930	£930	102/230
Alfa code immobiliser and alarm system	£260	●	●	213

● Standard ○ Optional – Not available

¹ Refer to colour table.

² On Super versions - Option 400 must be ordered with option 5KW (Darkened interior headlining). Price of option 400 includes the price of option 5KW.

³ Only available with 17" or 18" alloy wheels.

⁴ On Super versions - Option 211 must be ordered with option 275 (Rear armrest). Price of option 211 does not include the price of option 275.

⁵ On Sport versions - Option 212 must be ordered with options 275 (Rear armrest) or 454 (Height adjustable passenger seat) or option & RR (Comfort Pack). Price of option 212 does not include the price of options 275, 454 or 7RR.

EXTERIOR	GIULIETTA	SPORT	SUPER	CODE
Solid paint finish (Alfa Red)	•	•	•	5CG
Solid paint finish (Alfa Black & Alfa White)	£525	£525	£525	5CF/5CH ¹
Metallic paint finishes	£525	£525	£525	Various ¹
Matte Magnesium Grey	-	£1000	-	4H5
Tri-Coat paint finish (Competizione Red)	-	£1650	£1650	5IQ
Dark tinted rear windows	£210	•	£210	070
Chrome window surrounds	-	-	£195	4MQ
Electric double sunroof	-	£1200	£1200 ²	400
Fog lights	£160	•	•	097
Side skirts	-	•	-	926
Body coloured wing mirrors	•	•	-	976
Satin finish wing mirrors	-	-	•	4RR
Brembo braking system with Alfa Romeo red brake calipers	-	£500	£500 ³	4SU
Dark finish mirror caps	-	-	-	5JB

INFOTAINMENT	GIULIETTA	SPORT	SUPER	CODE
Alfa D.N.A.	•	•	•	-
Steering wheel paddles for ALFA TCT gearbox	-	-	£275 ¹⁰	4WE
DAB Radio	•	•	•	-
Uconnect™ 5" colour touchscreen infotainment system (with USB, Aux-in and Bluetooth® audio streaming) and Uconnect LIVE services	•	•	•	6Q3
Uconnect™ 6.5" colour touchscreen Radio Nav with preloaded 3D maps, Bluetooth® audio streaming, voice recognition, USB & Aux-in and Uconnect LIVE services	£1050 ⁹	£1050 ⁹	£1050 ⁹	6ZB
Mopar® Connect	£395	£395	£395	0FD

• Standard ○ Optional - Not available

⁶ Option 177 must be ordered with heated seats option 452. Cost of option 177 does not include price of heated seats.

⁷ On Super versions, option 177 is only available with options 211 or 275. The cost of 211 or 275 is additional to the cost of 177.

⁸ Uconnect™ 6.5" Radio Nav upgrade loses the CD Player.

⁹ On Sport & Super, option 40Y is linked to option 454, at additional cost.

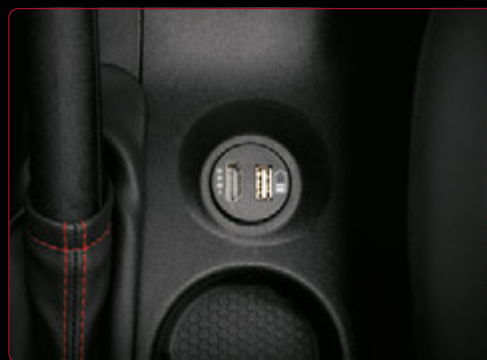
¹⁰ On Super, option 4WE is only available with TCT.

PACKS	GIULIETTA	SPORT	SUPER	CODE
Visibility Pack: (Electric folding wing mirrors, Electrochromic rear view mirror with deactivation button, Automatic windscreen wipers, Automatic headlights, Condensation sensor)	-	£320	£320	7DA
Comfort Pack: (Front and rear parking sensors, electric lumbar adjustment on driver and passenger seats, rear armrest with storage compartment, third rear head restraint and through-load system, height adjustable passenger seat)	-	£500	£500	7RR
Carbon Style Pack: Carbon effect side skirts, front grille surround, door mirrors and front splitter with red detailing	-	£850	-	0KH
Lusso Pack: Sports Leather seats	-	-	-	211
17" alloy wheel upgrade (from 16")	-	-	-	-
Rear armrest with storage compartment and third rear headrest	-	-	-	275
Uconnect 6.5" Sat Nav with LIVE services	-	-	£2650	6ZB ¹
SD card reader	-	-	-	RS1
Lumbar & height adjustable passenger seat	-	-	-	454/40Y
Aluminium kickplates	-	-	-	018
Chrome window surrounds	-	-	-	4MQ
Lusso Pack upgrade choices: Heated front seats	-	-	£260	452
Electrically adjustable front seats with electric lumbar adjustment and memory setting on driver's side	-	-	£1250 ²	177/40Y
18" alloy wheel upgrade	-	-	£450	-
Tech Pack: Alpine 7" Radio , Rear View Camera	-	£990	£990	08Z

● Standard ○ Optional - Not available



Tech Pack - Rear View Camera



Tech Pack - HDMI Port



Tech Pack - Alpine 7" touchscreen with Apple CarPlay and Android Auto™

¹ Uconnect™ 6.5" Radio Nav upgrade loses the CD Player.

² Option 177 must be ordered with Heated seats option 452 and option 211 or 275. Cost of option 177 does not include the price of options 452 and 211/275.

CARBON STYLE PACK

Available on Sport trim level only

- Carbon effect side skirts
- Carbon effect front grille surround
- Carbon effect door mirrors
- Carbon effect front splitter with red detailing





198 - Black-Antracite*



123 - Black



402/408 - Black

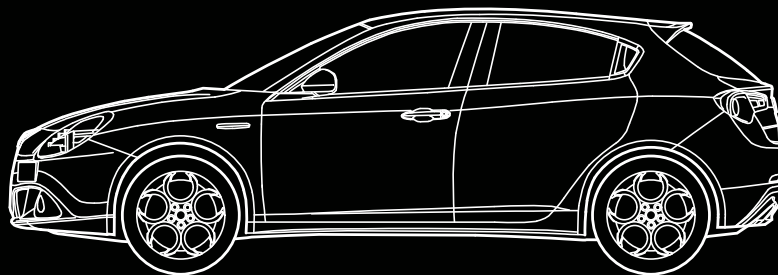
401 - Red

465 - Tan



1554

1798



955

2634

762

4351

1465

Luggage compartment capacity: 350 litres

SOLID



601 - Alfa Black



414 - Alfa Red



217 - Alfa White

METALLIC



318 - Stromboli Grey



409 - Lipari Grey



486 - Cobalto Blue



620 - Silverstone Grey



756 - Misano Blue*



805 - Etna Black

TRI-COAT



361 - Competizione Red *

MATTE



529 - Matte Magnesio Grey^A

* Not available on Giulietta.
^A Only available on Sport.



431 - 16" Turbine design alloy wheels with 205/55 R16 tyres



74A - 16" 7 hole design alloy wheels with 205/55 R16 tyres



420 - 17" Turbine design alloy wheels with 225/45 R17 tyres



5YN - 17" 5 hole design alloy wheels with 225/45 R17 tyres



6Y8 - 17" 5 hole design alloy wheels with dark finish with 225/45 R17 tyres



74B - 17" Multi spoke alloy wheels with 225/40 R18 tyres



68Q - 18" Turbine design alloy wheels with 225/40 R18 tyres



68P - 18" 5 hole design alloy wheels with 225/40 R18 tyres



6G6 - 18" 5 hole design alloy wheels with dark finish with 225/40 R18 tyres



6G7 - 18" Burnished Multi-spoke alloy wheels with 225/40 R18 tyres



6H6 - 18" Dual 5 spoke alloy wheels with titanium finish with 225/40 R18 tyres

WHEELS	CODE	GIULIETTA	SPORT	SUPER
16" Turbine design alloy wheels	431	•	-	£250
16" 7 hole design alloy wheels	74A	£250	-	•
17" Turbine design alloy wheels	420	£450	£250	£450
17" 5 hole design alloy wheels	5YN	-	•	£450
17" 5 hole design alloy wheels with dark finish	6Y8	-	£250	-
17" Multi-spoke alloy wheels	74B	£450	£250	£450
18" Turbine design alloy wheels	68Q	-	£450	£900
18" 5 hole design alloy wheel	68P	-	£450	£900
18" 5 Hole design alloy wheels with dark finish	6G6	-	£450	£900
18" Burnished Multi-spoke alloy wheel	6G7	-	-	£900
18" Dual 5 spoke alloy wheels with titanium finish	6H6	-	£450	£900

• Standard ○ Optional - Not available

	GIULIETTA	SPORT		SUPER			
TRIM LEVELS							
Seat upholstery	Giulietta Cloth	Giulietta Cloth	Sports Leather	Competizione Cloth	Sports Leather		
Seat colour	Black/Antracite	Black/Antracite	Black	Black	Black	Red	Tan
Seat description	Black/Antracite Giulietta Cloth	Black/Antracite Giulietta Cloth	Black Sports Leather	Black Competizione Cloth	Black Sports Leather	Red Sports Leather	Tan Sports Leather
Door panels/ dashboard surround	Black/Black	Black/Black	Black/Black	Black/Black	Black/Black	Red/Red	Tan/Tan
Dashboard insert	Matte Black	Darkflair Fire	Darkflair Fire	Matte Black textured	Matte Black textured		
Steering wheel	Leather with black stitching	Leather with black stitching	Leather with black stitching	Leather with black stitching	Leather - Black sports leather		
Interior code	198	198	402	123	408	401	465
Interior Option code	-	-	212	-	211		
SOLID							
414 Alfa Red (opt 5CG)	●	●	●	●	●	●	●
217 Alfa White (opt 5CH)	○	○	○	○	○	○	○
601 Alfa Black (opt 5CF)	○	○	○	○	○	○	○
METALLIC							
318 Stromboli Grey (opt 5CC)	○	○	○	○	○	○	○
409 Lipari Grey (opt 5CE)	○ ¹	○ ¹	○ ¹	○ ¹	○ ¹	○ ¹	○ ¹
486 Cobalto Blue (opt 5DN)	○	○	○	○	○	○	○
620 Silverstone Grey (opt 210)	○	○	○	○	○	○	○
756 Misano Blue (opt 5DS)	-	○	○	-	-	-	-
805 Etna Black (opt 58B)	○	○	○	○	○	○	○
EXCLUSIVE PAINT							
361 Competizione Red (opt 5JQ)	-	○	○	○	○	○	○
529 Matte Magnesio Grey (OPT 4H5)	-	○	○	-	-	-	-

● Default Exterior & Interior colour combination ● Default body colour (No Cost) ○ Optional body colour - Not available

¹ Lipari Grey paint is not compatible with alloy wheels 6G7

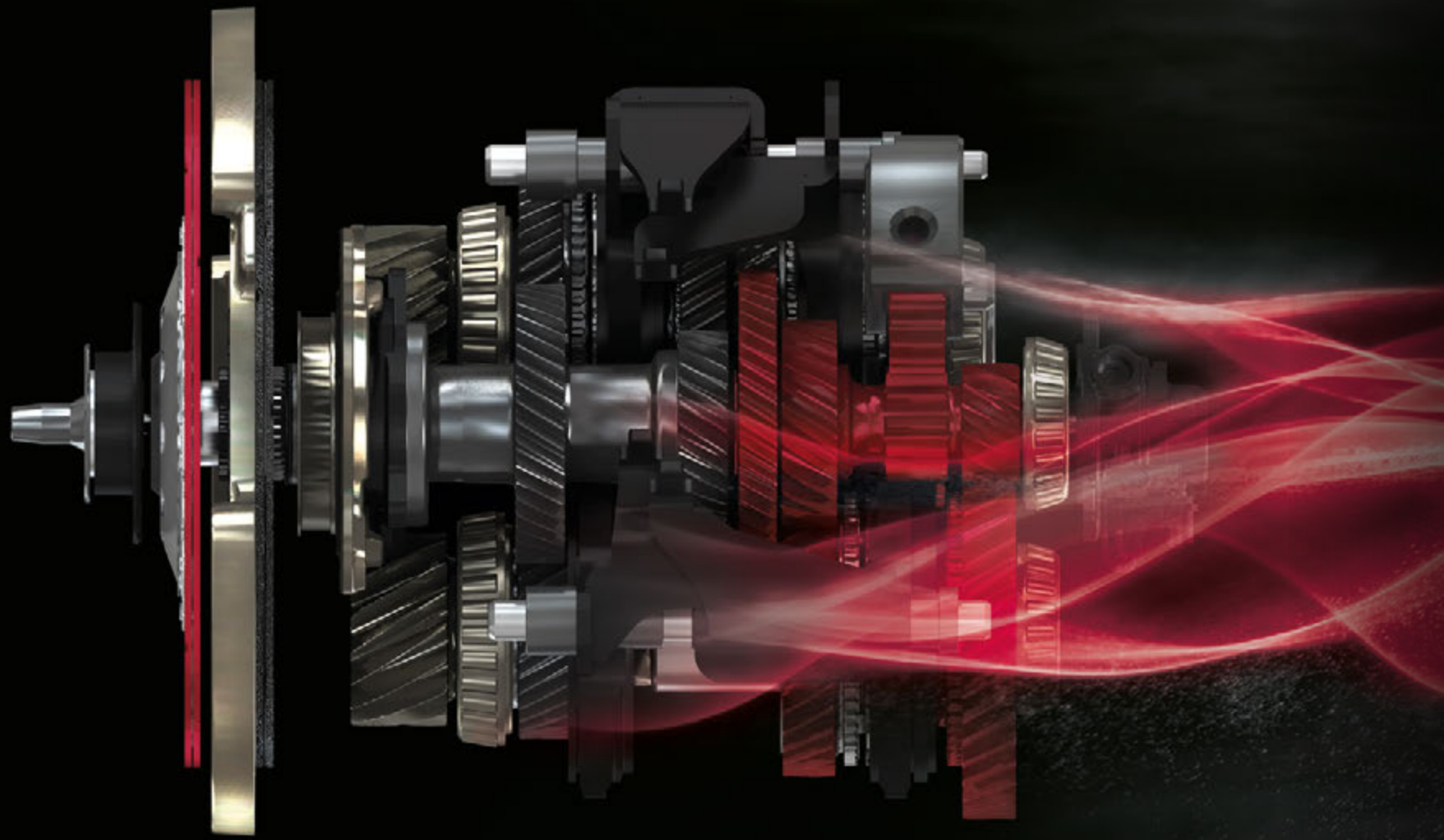
	1.4 TB 120 HP	1.6 JTD _{M-2} 120 HP	1.6 JTD _{M-2} 120 HP ALFA TCT
FEATURES			
Fuel	Petrol		Diesel
No. of cylinders, arrangement	4 in line		4 in line
Bore x stroke (mm)	72 x 84		79.5 x 80.5
Displacement (cc)	1368		1598
Compression ratio	9.8:1		16.5:1
Max. power output hp (kW - EC) at rpm	120 (88) 5000		120 (88) 3750
Peak torque Nm (kgm - EC) at rpm	215 (22) 2500		320 (32.5) 1750
ELECTRICAL EQUIPMENT (12V)			
Battery: Capacity (Ah)/Generator (A)	63/450		72/600
TRANSMISSION			
Drive	Front		Front
Number of gears	6 + 1R		6 + 1R
TYRES			
Standard version	205/55 R16		205/55 R16
STEERING SYSTEM			
Steering diameter kerb-to-kerb (m)	10.9		10.9
SUSPENSION			
Front	MacPherson independent with anti-roll bar		MacPherson independent with anti-roll bar
Rear	Multilink System		Multilink System
BRAKES			
Front (mm)	281		281
Rear	264		264

	1.4 TB 120 HP	1.6 JTD _{M-2} 120 HP	1.6 JTD _{M-2} 120 HP ALFA TCT
WEIGHTS - TANK CAPACITY			
Fuel tank (lit.)	60	60	
Kerb weight DIN (kg)	1280	1390	1400
Max towing weight unbraked (kg)	500	500	
Max towing weight braked (kg)	1300	1300	600
PERFORMANCE			
Top speed (mph)	121	121	
Acceleration (driver + 30 kg) 0-62 (s)	9.4	10.0	10.2
FUEL CONSUMPTION - EMISSIONS*			
WLTP Combined Low mpg (l/100km)	36.7 (7.7)	49.6 (5.7)	49.6 (5.7)
WLTP Combined High mpg (l/100km)	32.8 (8.6)	47.1 (6.0)	46.3 (6.1)
Exhaust emissions - CO ₂ (g/km)	164	123	125
Emissions Standard	Euro 6D Temp (Back correlated NEDC-2)		Euro 6D Temp (Back correlated NEDC-2)
Start&Stop	Standard	Standard	Standard

VERSION			
GIULIETTA	•		
SPORT	•	•	
SUPER	•	•	•

* Fuel consumption figures determined on the basis of the new WLTP test procedure as per Regulation (EU) 2017/1347. CO₂ figures, based on the outgoing test cycle (NEDC), will be used to calculate vehicle tax on first registration. Only compare fuel consumption and CO₂ figures with other cars tested to the same technical procedures. These figures may not reflect real life driving results, which will depend upon a number of factors including the accessories fitted (post-registration), variations in weather, driving styles and vehicle load.

For further information, please visit www.alfaromeo.co.uk/alfa-romeo-world/la-meccanica-delle-emozioni/certification-wltp or contact your local retailer.



ON THE ROAD (OTR) CHARGES INCLUDE:

First 12 months government Vehicle Excise Duty depending on CO₂ emissions (see table below), vehicle first registration fee (£55), number plate (£25.53) and delivery costs (£615).

VEHICLE EXCISE DUTY (ROAD FUND LICENCE) VALID FROM 1ST APRIL 2018

New cars are classified into one of 13 bands, depending on their carbon dioxide (CO₂) emissions level, measured in grams per kilometre (g/km).

TAX YEAR 2019-20			
CO ₂ EMISSIONS (G/KM)	STANDARD RATE	FIRST YEAR RATE (PETROL)	FIRST YEAR RATE (DIESEL) [^]
0	£0	£0	£0
1-50	£145*	£10	£25
51-75	£145*	£25	£110
76-90	£145*	£110	£130
91-100	£145*	£130	£150
101-110	£145*	£150	£170
111-130	£145*	£170	£210
131-150	£145*	£210	£530
151-170	£145*	£530	£855
171-190	£145*	£855	£1,280
191-225	£145*	£1,280	£1,815
226-255	£145*	£1,815	£2,135
Over 255	£145*	£2,135	£2,135

***CARS COSTING MORE THAN £40,000 PAY £320 YEARLY SUPPLEMENT FOR 5 YEARS = £465 TAX PER YEAR**

[^]NEW DIESEL VEHICLES REGISTERED AFTER 1 APRIL 2019 THAT DO NOT MEET THE RDE2 STANDARD WILL BE CHARGED A SUPPLEMENT ON THEIR FIRST YEAR RATE TO THE EFFECT OF MOVING UP BY ONE VED BAND

BENEFIT-IN-KIND TAXATION

The company car Benefit-in-Kind Taxation scale is linked to the CO₂ emissions level. The table right shows the percentage of the car price to be taxed (PIID value). A simple explanation of how to calculate BIK is shown below.

EXAMPLE OF HOW TO CALCULATE BIK

1. Look at the table on the right and find the BIK tax banding to be applied according to the CO₂ emissions of your car. (For example a Diesel car emitting 99g CO₂ is 24%).

2. Work out the car's price to be taxed (PIID value) which is calculated as: Total Retail Price (Basic Price + VAT) + Number Plate (£25.53) + Delivery costs (£615) + Options (Including VAT).
3. Calculate the BIK as follows: PIID value x BIK tax banding percentage.
4. Multiply BIK figure (from 3.) by your personal tax band - i.e. 20% or 40% to give your annual BIK costs.

2019-20 % BIK RATE		
CO ₂ EMISSIONS (G/KM)	PETROL	DIESEL
1-50	16%	0%
51-54	19%	0%
55-59	19%	0%
60-64	19%	0%
65-69	19%	0%
70-74	19%	0%
75	19%	0%
76-79	22%	26%
80-84	22%	26%
85-89	22%	26%
90-94	22%	26%
95-99	23%	27%
100-104	24%	28%
105-109	25%	29%
110-114	26%	30%
115-119	27%	31%
120-124	28%	32%
125-129	29%	33%
130-134	30%	34%
135-139	31%	35%
140-144	32%	36%
145-149	33%	37%
150-154	34%	37%
155-159	35%	37%
160-164	36%	37%
165 +	37%	37%

Source: <http://www.nextgreencar.com/company-car-tax/bik-rates/>

For more information about the Company Car Benefit-In-Kind Taxation Charges see the Alfa Romeo website: alfaromeo.co.uk



The mission of Mopar[®] is to ensure customers of all brands within Fiat Chrysler Automobiles receive a satisfying ownership experience for the vehicle's entire life cycle, putting their after-sales service leadership and know-how at their service. Mopar[®] looks after cars from the moment they leave the retailer onwards, guaranteeing the customer the very highest level of service, employing cutting-edge technology and innovative, original and high-quality products.

will be taken to your nearest authorised retailer and you will be offered assistance to continue with your onward journey. Full terms and conditions are available on request.

The Alfa Romeo Assistance Service for customers is guaranteed 24 hours a day, every day of the year. If you require these services, dial the Freephone number 00800 2532 0000.

COMPREHENSIVE WARRANTY

3 Year New Car Warranty

Your 3 year new car warranty comprises of a manufacturer's 24 month warranty and a further 12 months retailer warranty, guaranteeing your vehicle against any manufacturer's defects. These warranties give you complete peace of mind during the first 3 years of ownership so that should any components fail due to manufacturing defects these will be replaced with genuine Alfa Romeo parts, free of charge. Full terms and conditions are available on request and listed in your owner's manual.

8 Year Anti-Perforation Warranty

Any perforation of the bodywork due to corrosion will be replaced free of charge during the first 8 years.

3 Year Paintwork Warranty

In the unlikely event of any paintwork defects, due to faulty materials or manufacture, we will rectify these free of charge during the first 3 years.

3 YEARS FREE ROADSIDE ASSISTANCE

The Alfa Romeo Assistance Service provides help in the event of your vehicle developing a mechanical or electrical breakdown at either the roadside or your home. The service is designed to get your car moving as soon as possible. In the event that the fault cannot be fixed at the roadside, then your car

EASY CARE SERVICING PLANS

The Easy Care servicing plan is a flexible annual service plan applicable for every Alfa Romeo model. These service plans are available from one – five years and include of all the scheduled maintenance required on your vehicle depending on the term or mileage selected. They contain all of your essential servicing requirements and replicates the scheduled maintenance schedule shown. These plans include all the parts, labour and fluids required to perform the service schedule created for your car. For more information please contact your Alfa Romeo retailer.

PETROL	DIESEL
9,000 mls	12,000 mls
18,000 mls	24,000 mls
27,000 mls	36,000 mls
36,000 mls	48,000 mls
45,000 mls	60,000 mls

ACCESSORIES & MERCHANDISE

An extensive range of genuine accessories and merchandise is available - please visit your local retailer or go to www.alfaaccessories.com

FINANCIAL SERVICES

ALFA ROMEO FINANCIAL SERVICES*

Alfa Romeo Financial Services offers a comprehensive range of finance and insurance plans including Alfa Romeo Preferenza, traditional Hire Purchase, Guaranteed Asset Protection Insurance and SMART Repair Insurance. Please ask your Alfa Romeo retailer for more information or visit the alfaromeo.co.uk website. Written quotations available on request.

ALFA ROMEO CONTRACT HIRE**

Alfa Romeo Contract Hire provides hassle free motoring for private and business customers - you benefit from low initial outlay, regular rentals and no worry about disposing of your vehicle at the end of the contract. You can also include a full maintenance package within the monthly rental. For more information please contact your Alfa Romeo retailer. Written quotations available on request.

*Alfa Romeo Financial Services is a trading style of FCA Automotive Services UK Ltd. FCA Automotive Services UK Ltd is authorised and regulated by the Financial Conduct Authority (Firm Reference Number 312683 and CCI-IP-421472). Credit available to anyone aged 18 or over subject to status. A guarantee may be required. Written quotations are available from Alfa Romeo Financial Services, PO Box 4465, Slough, SL1 0RW.

**Alfa Romeo Contract Hire is a trading style of FCA Fleet Services UK Ltd. FCA Fleet Services UK Ltd holds Interim Permissions with the Financial Conduct Authority for credit purposes (CCI-IP-439467). Credit available to anyone aged 18 or over subject to status. A guarantee may be required. Contract Hire facilities are available subject to credit approval. Written quotations are available from Alfa Romeo Contract Hire, PO Box 4590, Slough, SL1 0WU.

INFORMATION & NEWS

ALFA ROMEO NEWSLETTER

The Alfa Romeo newsletter offers an exclusive insight into everything Alfa Romeo: from eagerly anticipated new models to celebrating the heritage of the brand. Get the latest news on our website or checkout our social channels.

SOCIAL COMMUNITIES. #WeAreAlfa

Our social channels are a place for people to share their passion for Alfa Romeo with each other and us. With over 100,000 active members, it's your chance to join a community, discover breaking news, enter exclusive competitions and be a part of the Alfa Romeo story. Join the conversation on at #WeAreAlfa.

**FOR FURTHER INFORMATION,
TO FIND YOUR LOCAL RETAILER
AND TO BOOK A TEST DRIVE CONTACT US:
ALFAROME.CO.UK
FREEPHONE 00 800 2532 0000
(LINES OPEN MON - FRI 9AM - 6PM)**



La meccanica delle emozioni

alfaromeo.co.uk



#WeAreAlfa